



# Emergency Action Plan Flow Chart

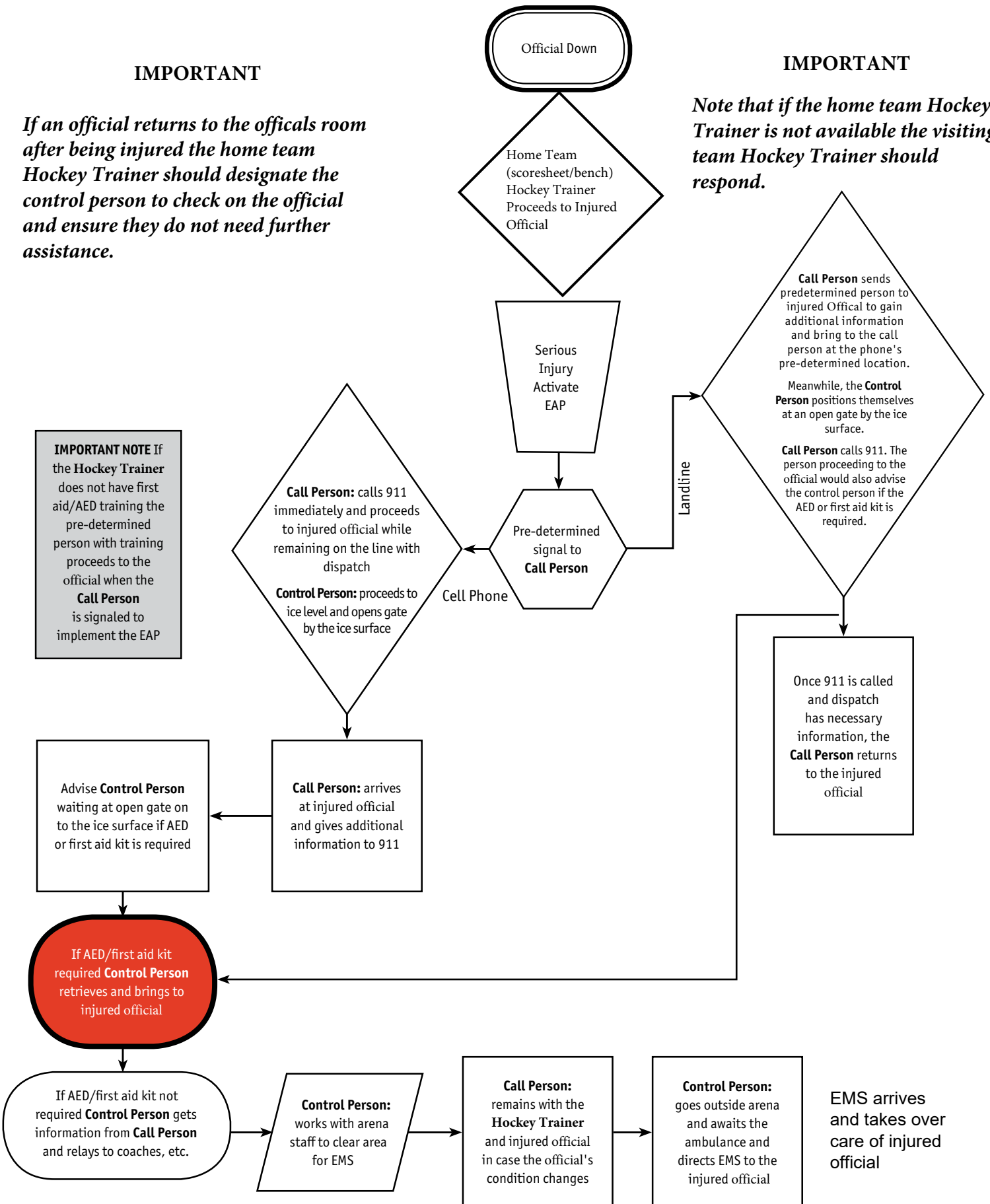


## IMPORTANT

*If an official returns to the officials room after being injured the home team Hockey Trainer should designate the control person to check on the official and ensure they do not need further assistance.*

## IMPORTANT

*Note that if the home team Hockey Trainer is not available the visiting team Hockey Trainer should respond.*



**IMPORTANT NOTE** If the Hockey Trainer does not have first aid/AED training the pre-determined person with training proceeds to the official when the Call Person is signaled to implement the EAP

Once 911 is called and dispatch has necessary information, the Call Person returns to the injured official

Advise Control Person waiting at open gate on to the ice surface if AED or first aid kit is required

Call Person: arrives at injured official and gives additional information to 911

If AED/first aid kit required Control Person retrieves and brings to injured official

If AED/first aid kit not required Control Person gets information from Call Person and relays to coaches, etc.

Control Person: works with arena staff to clear area for EMS

Call Person: remains with the Hockey Trainer and injured official in case the official's condition changes

Control Person: goes outside arena and awaits the ambulance and directs EMS to the injured official

EMS arrives and takes over care of injured official